

### The scope

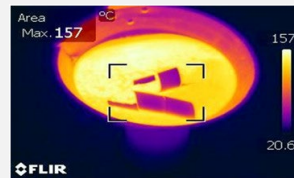
Terminations are an important part of the cable network. If the installation instructions are not followed by the installer or incorrect material supplied, then the termination is the weakest link and can lead to premature failure of the plant.

### Martec quality assurance process

A Quality Control check list for MV Terminations must be completed and signed by the inspector and the installer according to the installation instruction and the type of insulation system.

If required, a moisture test must be conducted to ensure the insulation of the cable system is moisture free.

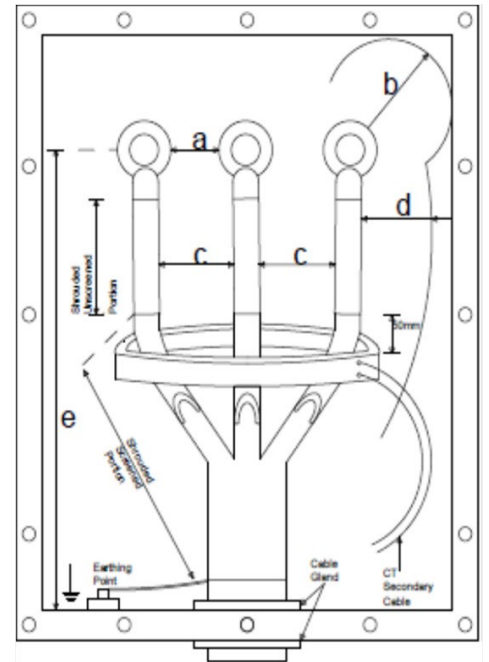
Refer to Martec works instruction - Medium Voltage Crackle Test Control Process and Instructions.



The below steps are to demonstrate the Martec Quality Assurance processes that will be followed during the installation process depending on the type of insulation system.

### Other QA processes

Record dimensions on completion

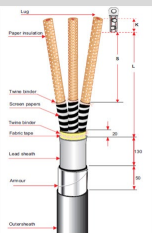


Symbol	Description
a	Minimum distance between live bare metal phase to phase
b	Minimum distance between live bare metal to earth
c	Minimum distance between covering insulation between phases
d	Minimum distance between covering insulation between live metal and phases
e	Minimum distance from gland plate to lowest termination point for three core cables

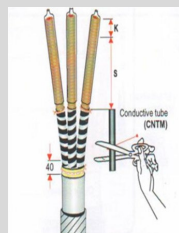
### Always the 1<sup>st</sup> time right



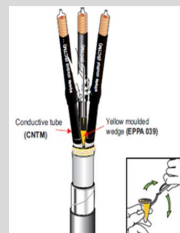
**Step 1:** The installer must prepare the termination as per the installation instruction and Martec QC record the dimensions accordingly.



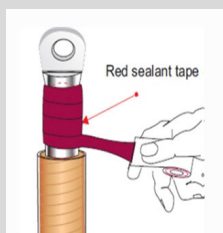
**Step 2:** Martec QC record the dimensions accordingly and ensure that the stress control system is in the correct position.



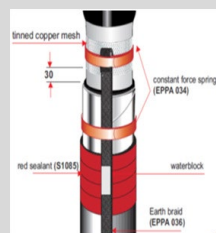
**Step 3:** Martec QC will ensure that the required semi conductive systems are implemented.



**Step 4:** Martec will ensure that the sealant systems are implemented to avoid moisture entry..



**Step 5:** Martec will ensure that the correct earth system process are followed and recorded.



**Step 6:** On completion, Martec will ensure that all the dimensions were recorded and implemented according to the installation instructions.

